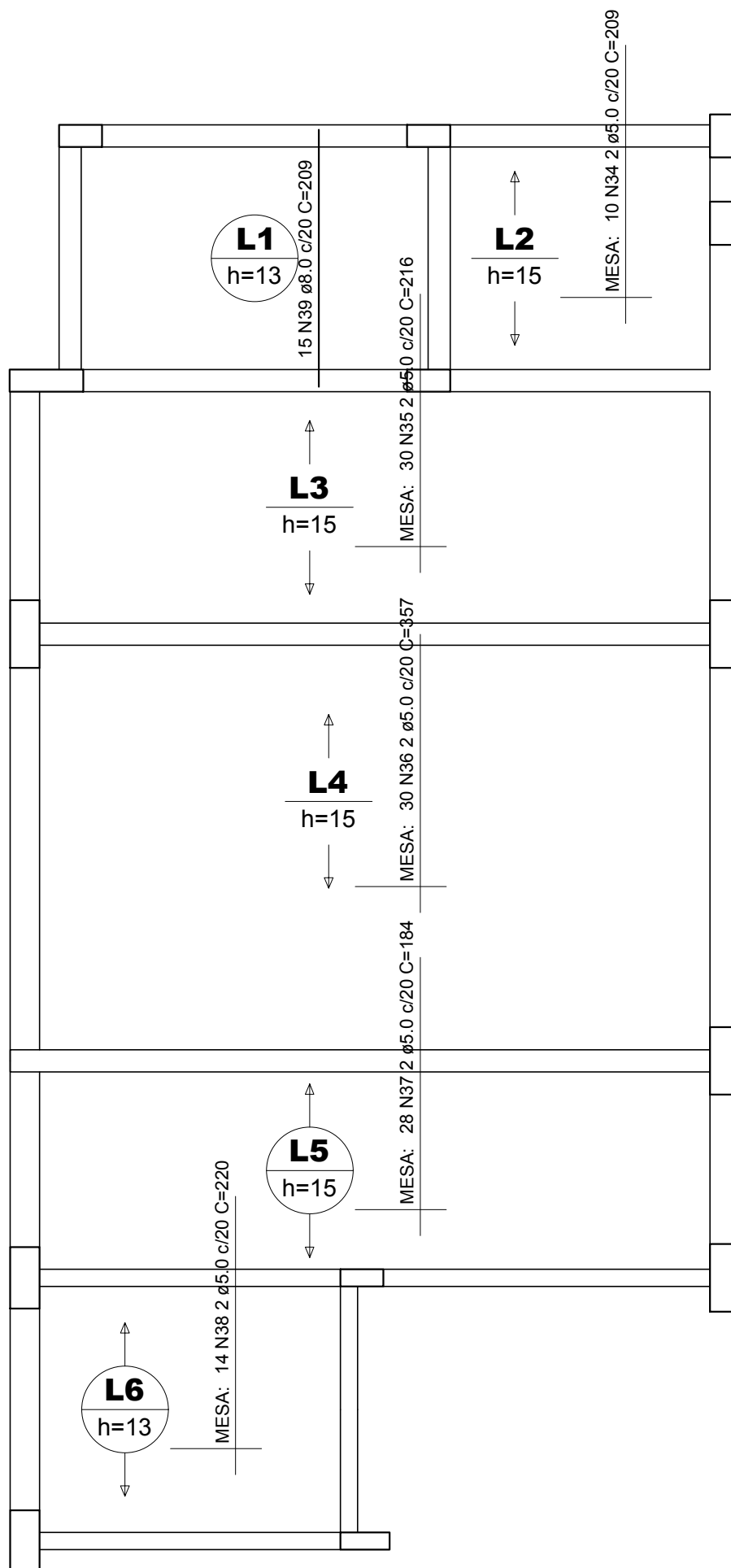


Armação positiva das lajes do  
pavimento Subsolo (Eixo X)

escala 1:50



Armação positiva das lajes do pavimento Subsolo (Eixo Y)

escala 1:50


Lajes									
Dados						Sobrecarga (kgf/m²)			
Nome	Tipo	Altura (cm)	Elevação (cm)	Nível (cm)	Peso próprio (kgf/m²)	Adicional	Acidental	Localizada	Água
L1	Maciça	13	0	-190	325	154	300	-	1000
L2	Treliçada 1D	15	0	-190	323	154	300	-	0
L3	Treliçada 1D	15	0	-190	323	154	300	-	0
L4	Treliçada 1D	15	0	-190	323	154	300	-	0
L5	Pré-moldada	15	0	-190	323	154	300	-	0
L6	Pré-moldada	13	0	-190	283	154	150	-	0


Pilares			
Nome	Seção (cm)	Elevação (cm)	Nível (cm)
P1	18x35	0	-190
P2	18x35	0	-190
P3	24x35	0	-190
P4	24x35	0	-190
P5	18x50	0	-190
P6	18x50	0	-190
P7	18x60	0	-190
P8	18x35	0	-190
P9	24x55	0	-190
P10	24x55	0	-190
P11	18x55	0	-190
P12	18x35	0	-190
P13	24x55	0	-190
P14	18x55	0	-190
P15	18x35	0	-190
P16	24x50	0	-190
P17	14x35	0	-190
P18	24x55	0	-190
P19	24x50	0	-190
P20	14x40	0	-190
P21	24x55	0	-190
P22	18x55	0	-190
P23	18x35	0	-190
P27	24x35	0	-190
P28	24x55	0	-190
P29	18x55	0	-190
P30	18x50	0	-190
P31	24x35	0	-190
P32	24x35	0	-190


Vigas			
Nome	Seção (cm)	Elevação (cm)	Nível (cm)
V1	18x40	0	-190
V2	18x40	0	-190
V3	18x40	0	-190
V4	18x50	0	-190
V5	18x50	0	-190
V6	18x40	0	-190
V7	14x40	0	-190
V8	14x40	0	-190
V9	18x40	0	-190
V10	14x40	0	-190
V11	14x40	0	-190
V12	24x40	0	-190
V13	18x40	0	-190
V14	14x40	0	-190
V15	18x40	0	-190
V16	24x40	0	-190
V17	18x40	0	-190
V18	18x40	0	-190

Blocos de enchimento						
Detalhe	Tipo	Nome	Dimensões(cm)			Quantidade
			hb	bx	by	
1	Lajota cerâmica	B8/30/20	8	30	20	60
2/3	Lajota cerâmica	B10/30/20	10	30	20	496

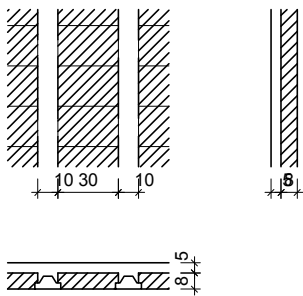
Características dos materiais	
fck (kgf/cm²)	Ecs (kgf/cm²)
250	241500

Legenda dos pilares	
	Pilar que passa

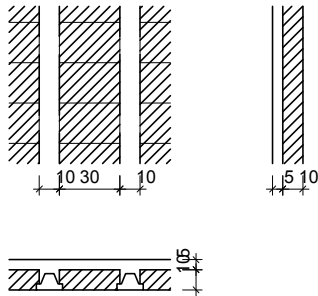
Legenda das vigas e paredes	
	Viga

Legenda das lajes	
	Laje

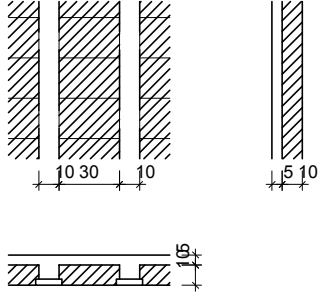
**Detalhe 1 (esc. 1:30)**



**Detalhe 2 (esc. 1:30)**

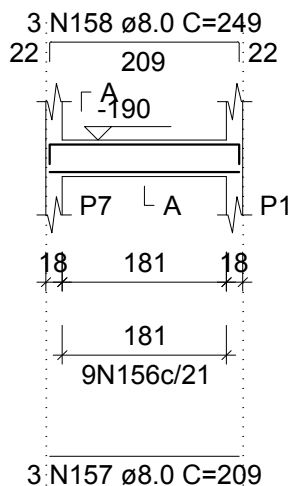


**Detalhe 3 (esc. 1:30)**



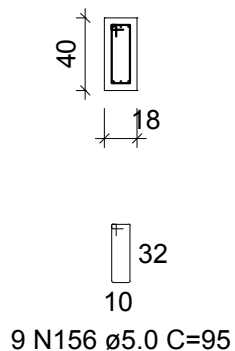
## V13 (18 x 40)

ESC 1:100



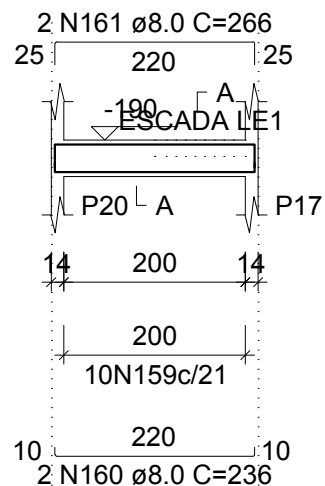
### SEÇÃO A-A

ESC 1:50



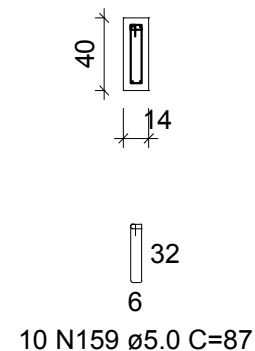
## V14 (14 x 40)

ESC 1:100



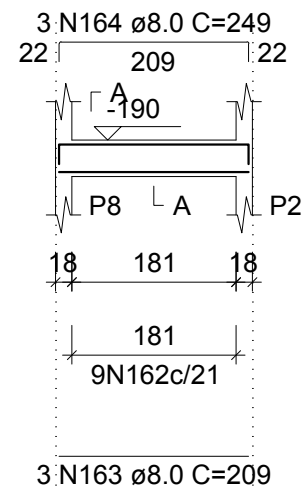
### SEÇÃO A-A

ESC 1:50



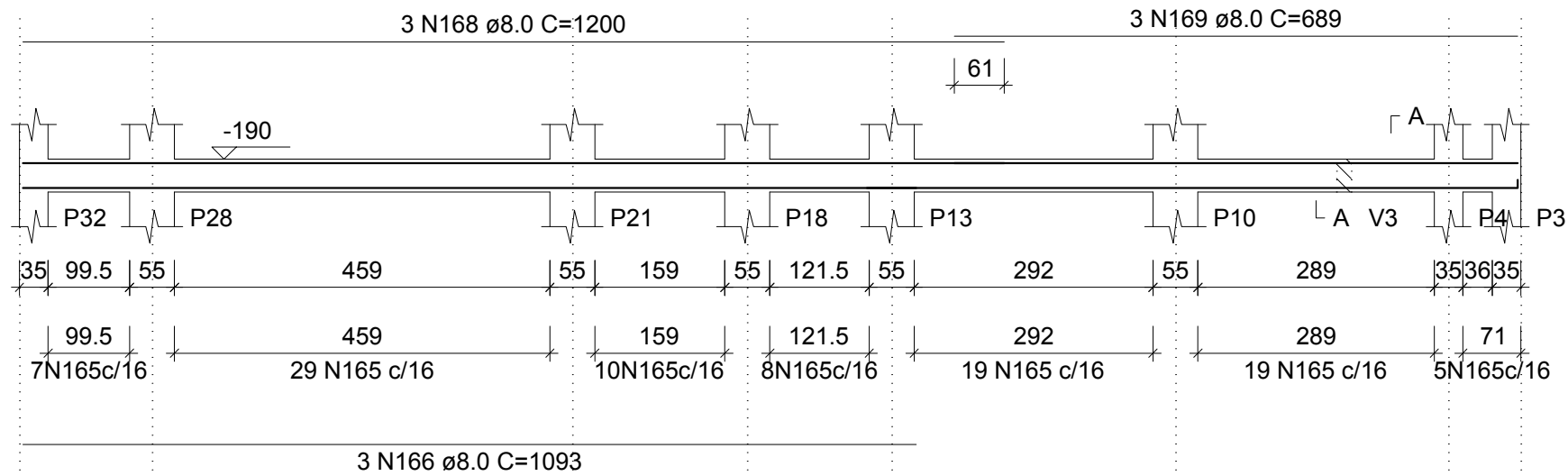
## V15 (18 x 40)

ESC 1:100



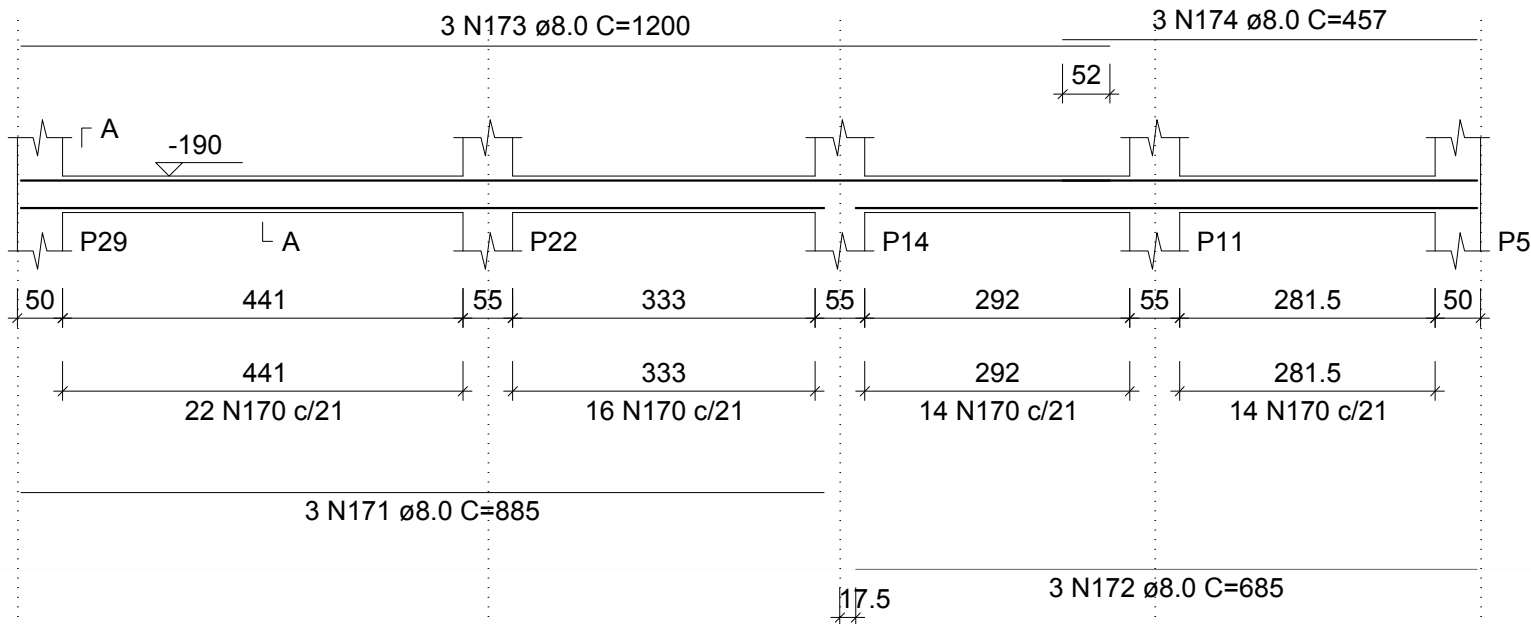
## V16 (24 x 40)

ESC 1:100



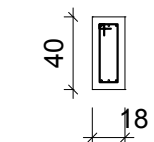
# V17 (18 x 40)

ESC 1:100



## SEÇÃO A-A

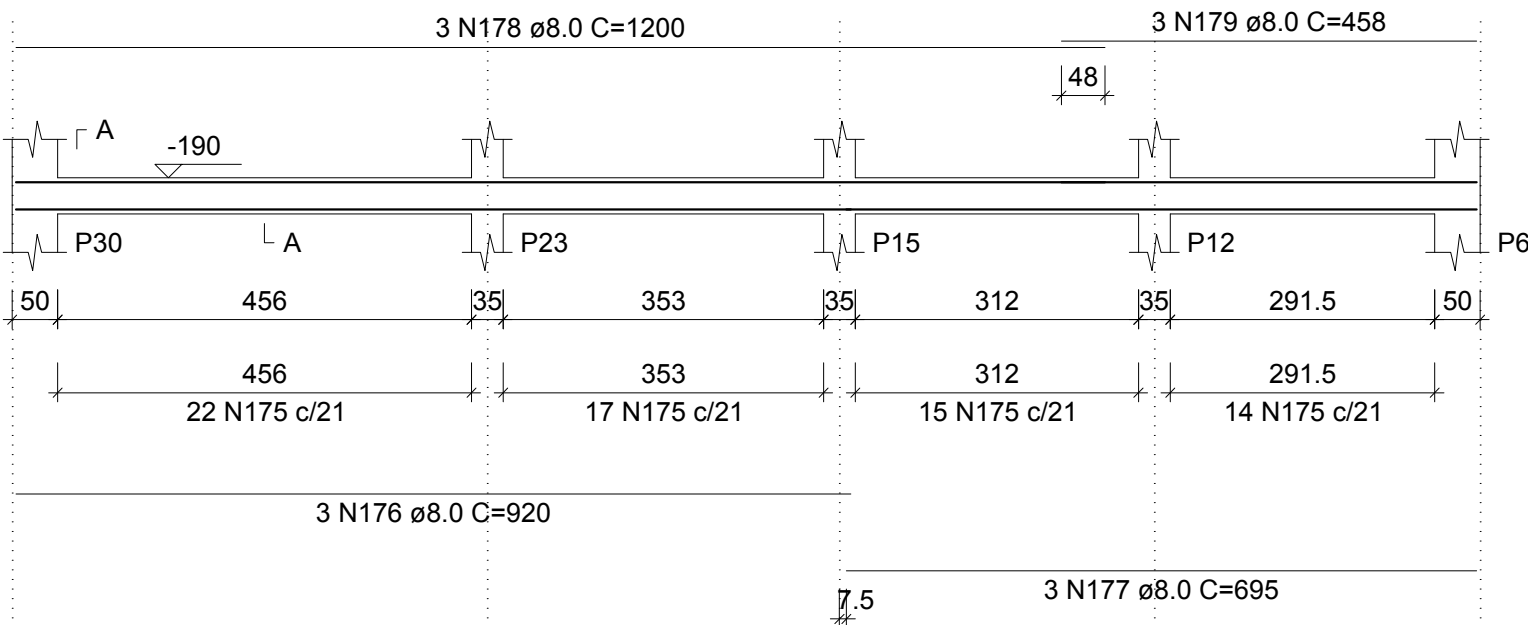
ESC 1:50



66 N170  $\phi$ 5.0 C=95

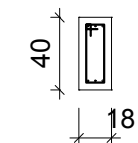
# V18 (18 x 40)

ESC 1:100

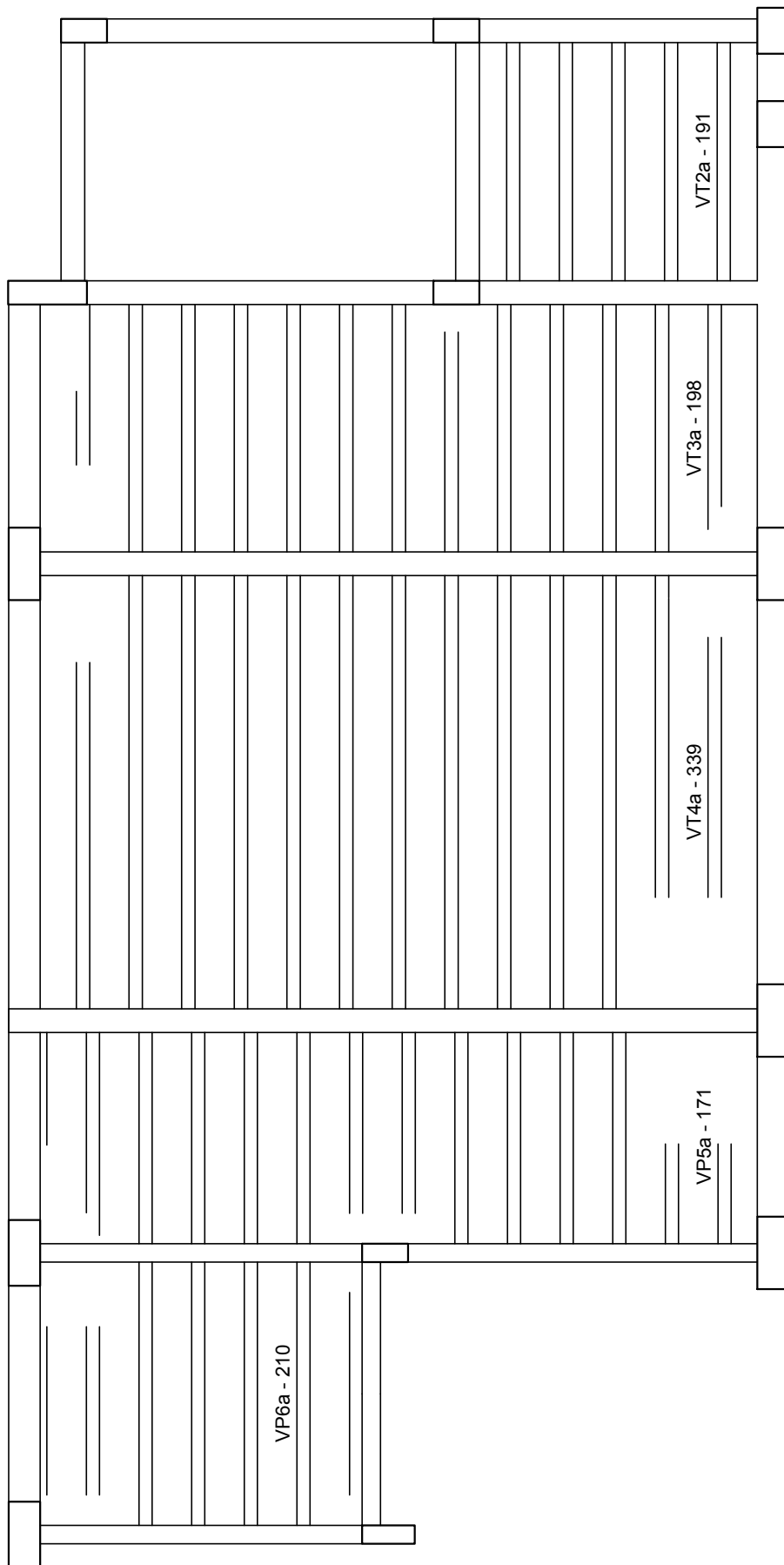


## SEÇÃO A-A

ESC 1:50



68 N175  $\phi$ 5.0 C=95



# Planta de vigotas pré-moldadas

escala 1:50